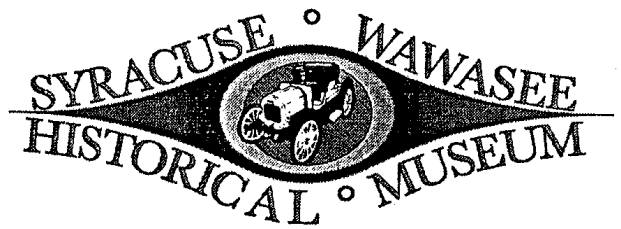


Quarterly Newsletter

Volume VI, Issue 3 September 2018



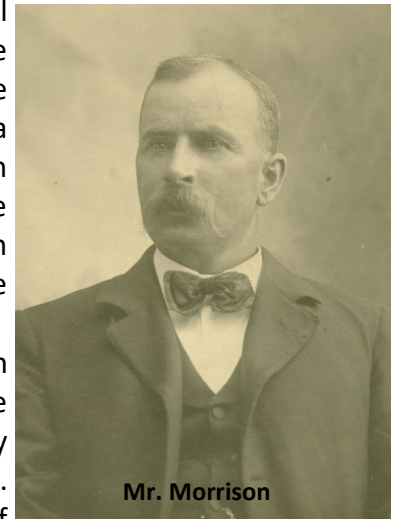
Inside this issue

Updates.....	1
Visiting Exhibits.....	2
Visiting Exhibits continued.....	2
Donations.....	3
Upcoming Events.....	4
Sponsorship Update.....	4

Updates.... by Jamie Clemons

Throughout the summer, the museum has provided several opportunities for the public to learn more about our wonderful community.

In June, we hosted our annual meeting where we let the community know about all of the things we have accomplished over the last year, as well as what we have planned for the coming year. At the conclusion of the annual meeting, Susie Brandes, a Syracuse local artist, presented a compilation of her artwork. She shared with us how her work has changed over time, what inspires her work, and the experiences that have shaped her art work. The museum very much appreciates Susie giving time to come to the museum and talk with the community.



Mr. Morrison

July began our Centennial Homes programs for 2018. July's program featured homes and families on Morrison Island. Presenters included Jane Finch, Jerry Moore, Mark Shambaugh, Terry Griffith, Myrna Harting, Bill Harting, Mary Dorman. Jim Benninghoff gave a historical perspective of the island.



Ditton Hotel

August's Centennial Homes featured homes from the South Shore of Lake Wawasee. Presenters included Anita Cast, Peter Rogers, and Helen White-Yoder. The Deister Family and the similarities of Piers 526 and 540 were also featured.

We are open for more ideas for the coming years' installments of Centennial Homes programs. If you know of a centennial home, please contact the museum with your idea. We would like to keep this program going for many more years. And, if you missed attending these programs, keep a lookout for when they will be available on DVD. A big THANK YOU goes out to Donna Workman for her wonderful baked goods at each program.

Speaking of DVDs! This summer, through a grant from the Kosciusko County Community Foundation (KCCF), the museum was able to purchase video equipment to be used in all of our presentation programs. We will now be able to produce a better quality of video to put on DVD for the community to purchase.

The Youth History Club (YHC) was, despite a lower turnout, another success! This year, kids learned about prehistoric and historic instruments, music written in and about Wawasee, and items in the museum that need to be cranked in order to operate. They learned how to make paper. They also learned about the history of photography. The entire program was offered free of charge with funding provided by the DEKKO Foundation and the KCCF. Next year, we will be exploring how to make butter and bread, among other topics. Please plan to join us! All ages are welcome, but keep in mind that the lessons are geared toward mid-elementary students.

Visiting Exhibits By Jamie Clemons

If you've not had a chance to make it in to the museum over the summer, you have been missing out! Normally, we usually do just one summer exhibit. This summer, we expanded our horizons and did two summer exhibits. We typically have two cases for visiting exhibits that rotate on a 6-8 week basis. This summer they have consistently been rotated on a 4 week basis. In addition to these exhibits, our Dolan collection has been rotating in and out to accommodate Ball State's cataloguing of the collection.

Do you have a collection of items that you think would make a great visiting exhibit? Call the museum and suggest your collection! We are always looking for items to borrow that can be put on display and that would be interesting for the public.

Our Summer Exhibits: Ski Clubs & "What IS It?"



Featured in the ski clubs exhibit was the Hoosier Ski Club of the 1950s and the WAWA Skiers of the 1960s. Multiple participants in both clubs were responsible for loaning photos, trophies, and skis to make this display. Those who loaned us exhibit items include Carolyn Smith Baker, Cathy Smith Lemberg, Cynthia Haram Pidgeon, Nancy Schedt Pickens, Dave Eckrich, and the Ensminger Family. Thank you so much for loaning the museum these wonderful items and being willing to share your information! And while we don't have any videos of these wonderful people waterskiing, we had a video playing on a tablet of the 2014 Wisconsin State Waterski Show, which showcases some of the things these athletes would have done.

The "What IS It?" display was a collection of items from yesteryear. John Heckaman loaned over half of the 11 items featured throughout the museum. Included in the display was a shoe repair kit, a pair of hand-shear hedge trimmers, a corn jobber with boot, and a train order and message passer. Most items dated to the late 1800s to early 1900s. They were all in working order. And to answer the question, yes, the hedge trimmers and corn jobber were *very* sharp!



Dolan Collection

Throughout the year, the Ball State Applied Anthropology Labs have been periodically taking and returning portions of our Dolan Native American Artifact collection. Dana Northam, a student at BSU under the supervision of archaeologist Dr. Matthew Purtill, has been properly identifying, cataloguing, and 3D imaging the collection.



While the artifacts have been gone, we have had the opportunity to create new exhibits. The first exhibit included genuine and replicated items from the French and Indian War era, as well as photos from the 2017 Gathering at Five Medals reenactment festival. The items represented items that both the Native Americans and the French settlers would have used and traded.

Now, visitors to the museum can see an Extinct Animals of North America exhibit. This exhibit features fossils that often get overlooked in our collection. We have even featured fossilized teeth!

In addition to the fossils and information, videos playing on a tablet and an informational binder allow children and adults to explore even more information on various prehistoric animals that may have lived in the area.

Visiting Exhibits...

Continued

Current Displays

- The centennial home of Lake Wawasee resident Anita Hursh Cast is on display now at the museum. Anita, a native of Goshen, IN, was Miss Indiana of 1958. Articles in the Goshen News, as well as pictures from the pageant, are also on view.



- Midget Car Racing at Hunnicut Park fills one of our display cases. Photographs of the racers and the track have been popular views. He have a helmet, goggles, and other memorabilia from the 1950s racing days also on display.

- Sargent's Hotel and the Falcon display features items such as photos, a restaurant chair, a luggage cart side, the Falcon light and flag.



- Smith-Walbridge Camp primarily features photos from the majorette and band camp years.

Visiting exhibit plans are underway for the fall and spring. We will have a special archaeology display for September, a firefighter display for October, and an Armistice Day exhibit for November. Keep up with us on Facebook and our website for upcoming exhibits and programs!

Donations



Another great season for donations to the museum!

- Joan Stoelting**—Shoe repair kit, scrap book of movie frame photos, butter churn, butter mold, ceramic jug, basketball photo, Eastern Star photo, Burger's matchbook, Rexall bottle, Thornburg drugstore labels, 1971 PTO membership card
- Myrna Harting**—Group photo on Buttermilk Point c. late 1800s-early 1900s
- Donna Workman**—1949 Syracuse High School reunion yearbook, cookies
- Connelly Family**—Syracuse High School commemorative salt shaker
- Christopher Harris**—Easter Star scrapbook
- Donna Nicolai**—Jones Dairy milk bottles, Wawasee Beverage bottle, Huntington Building wood coin, ceramic commemorative plate
- Mike Ormsby**—Antique Hoosier cabinet, 1896 Simmons Siberia icebox
- Sue Rush**—The Cove Inn (dining table, flyer, menu, aerial photo) and Lake Wawasee fishing guides
- Roger & Darleen Feters**—Firefighter stretcher





Syracuse-Wawasee Historical Museum

1013 North Long Drive

Syracuse, IN 46567

Phone: 574-457-3599

Email: director@syracusemuseum.org

Website: www.syracusemuseum.org

Hours: Tuesday-Saturday, 10 a.m.-2 p.m.

Sponsorship Results

It requires approximately **\$100 per day** for our operation expenses. At the beginning of the summer, we asked you, our loyal patrons and community, to help offset our operation costs through sponsorship. **We are happy to announce that, to date, you have helped us stay open for 84 days! Thank you!!**

It's not too late if you would still like to contribute for 2018. You may simply send in your check marked "Sponsorship Drive" in the memo.

Upcoming Events

By Jamie Clemons

September 22, 2018 @ 11:00am Archaeology Month Program with Wade Tharp and Dana Northam:

Wade Tharp, Archaeologist with the Indiana Department of Natural Resources, Division of Historic Preservation and Archaeology, will be presenting "Archaeology in Your Community." He will define what archaeology is (and what it is not) and explore prehistoric and historic archaeology in Indiana and in Kosciusko County. He will provide an overview of the laws that protect and preserve Hoosier archaeological resources, and reveal how you can get involved in archaeology.

Dana Northam, a student at Ball State University, will discuss attributes of our Dolan Native American collection and some interesting discoveries she had made while cataloguing the collection.

October 14, 2018 @ 2:00-4:00pm Chautauqua S.S. Lillypad Tour:

Chautauqua Wawasee will be presenting another Lillypad Fall Color boat tour. A "Then & Now" history tour around beautiful Lake Wawasee aboard the S.S. Lillypad will be narrated by Ann Garceau, board member of the Syracuse-Wawasee Historical Museum. The fare will be \$20 per person. Contact Chautauqua Wawasee at the following web address: <http://www.chautauquawawasee.org/lillypad-fall-color-tour/>



Upcoming Events

September: Indiana Archaeology Month

September 22 @ 11:00am—Archaeology Month program

October: Fire Safety Month Exhibit

October 14—Chautauqua Lillypad Historic Boat Tour

October 20—Indoor Garage Sale (Museum holds concessions)

October 27—Fall Carnival (Museum has special night hours)

November: Armistice Day Exhibit

November 22-26—Closed for Thanksgiving holiday

December: Winter Exhibit installed

December 1—Breakfast with Santa (Museum will open early and provide a craft)

December 23—January 7—Museum Closed for Christmas Break

The museum is always open for visiting display ideas.

These can be featured around a specific type of item, person, or a business. Some examples of previous visiting displays include: WWI medical instruments, buttons, native wood samples, wooden cups, hats, boats, comic books, featured artists, Fischer-Price pull toys, B&O Railway train models, local authors, metal cast toy trucks, and eggshell ornaments. Please contact the museum if you have a collection, contact, or idea for a visiting display.